



BRAHMAN HERD BULL

Complete this form for one or multiple bulls

* = mandatory field

© 2026 AuctionsPlus Pty Ltd

No part of this form may be reproduced in any form or by any means without prior permission of AuctionsPlus. Form Release: June 2026

Title/Tag/ Animal ID/s:*

Description:*

Vendor:*

Town:*

QLD

No. Head:*

GST Registered? * Yes No

Delivery Dates: * dd/mm/yyyy

to

Earliest

Latest

Delivery Notes: e.g. 24 hours notice for collection, B-Double only

Agency Trading Terms:*

Vendor Disclaimer/ Warranty:

Vendor Contact Details or APID:*

Age/s: * in months

Sire/s: * Dam/s: *

if unregistered,
state Herd Bull/Cow

Vendor Bred? * Yes No, Vendor has owned for:

Grazing Conditions: * e.g. access to grain for X days

PRICES

BID INCREMENT \$/HEAD

- \$100
- \$200
- \$500
- \$1000

START

RESERVE

Horn Status*

Polled Scurred

Horned Dehorned

Tipped

Colour* Grey Red Other:

Scrotum & Testicles*

A = Normal (elongated)

B = Normal (rounded)

C = Lateral rotation

D = Distinctly cleaved scrotum

E = Unilateral hypoplasia

F = Scrotal hernia

G = Incomplete descent of one testicle

Testicles* Caution should be used with testicle sizes about 45cm

Scrotal Size (cm)	Max weight (kg) scrotal size is acceptable	No. Head
28	425	
29	450	
30	475	
31	525	
32	575	
33	625	
34	725	
35	950	

Semen*

Motility:

Morphology:

Sheath & Navel Score*

1-3 = Tight

4 = Small

5-6 = Moderate

7 = Large

8-9 = Very Large

State number of head (& animal IDs if known) for the following:

Feet*

1 = Open/ Divergent

2

3

4

5 = Ideal

6

7

8

9 = Scissor Claw

Pastern*

1 = Stubbed Toe

2

3

4

5 = Ideal

6

7

8

9 = Shallow Heel

Hoof Trim* Yes No

Front Legs Front View*

Normal

Knock Kneed

Bow Legged

Shoulders*

Smooth Shoulders

Prominent Shoulders

Hind Legs Rear View*

1 = Bow Legged

2

3

4

5 = Ideal

6

7

8

9 = Cow Hocked

Hind Legs Hock Setting Side View*

1 = Straight

2

3

4

5 = Ideal

6

7

8

9 = Sickle Hocked

Weight*	No. Head	Weight*	No. Head

Temperament*

No. Head

1. **Docile:** Settled & somewhat dull disposition.

2. **Quiet:** Displaying a quiet & calm disposition. Handler in control at all times.

3. **Slightly Stirry:** Manageable but impatient. Clear signs of eagerness to return to mob.

4. **Stirry:** Out of control/jumpy. Large flight distance. tail flicking/bellowing in crush.

5. **Aggressive:** Fearful, extreme agitation. May exhibit attack behaviour when handled alone.

			Score Rating	Star/s	Tally
Structure (as per template)	Legs	Hind Legs rear View & Hind Legs Hock Setting Side View Score of:	4, 5 & 6 1, 2, 3, 7, 8 & 9	= 1 = 0	/1
	Feet	Feet + Pastern Score of:	4, 5 & 6 1, 2, 3, 7, 8 & 9	= 1 = 0	/1
Sheath & Navel			3, 4 & 5 2 & 6 1, 7, 8 & 9	= 2 = 1 = 0	/2
	Semen	Motility	+ 60%	= 1	/1
			Under 59%	= 0	
	Morphology		Pass Fail	= 1 = 0	/1
Data Supplied (e.g. Birth Weight, Weaner weight, Yearling weight, Dam Calving interval)			Raw Data	= 2	/2
			< 2 measurements required or Genomic EBV	= 1	
			EBV with <1 trait measured	= 1	
			No EBV or Genetic Data provided	= 0	
Temperament			1 Docile - 2 Quiet	= 1	/1
			3 Slightly Stirry, 4 Stirry, 5 Aggressive	= 0	
Total Score					/10

SCORE REFERENCES

Feet



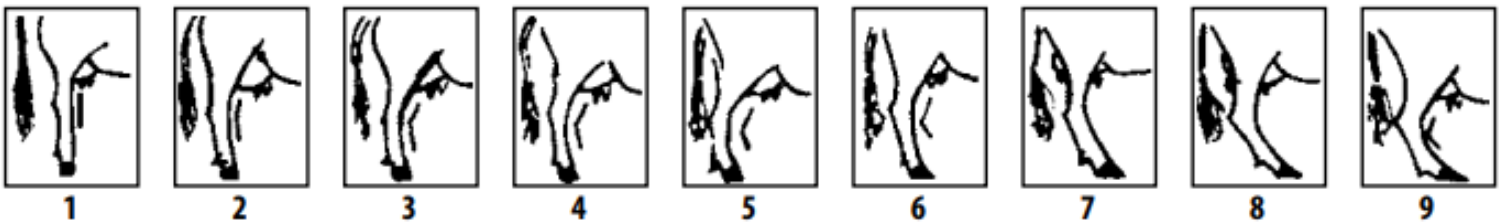
Pastern



Hind Legs

Hock Setting

Side View



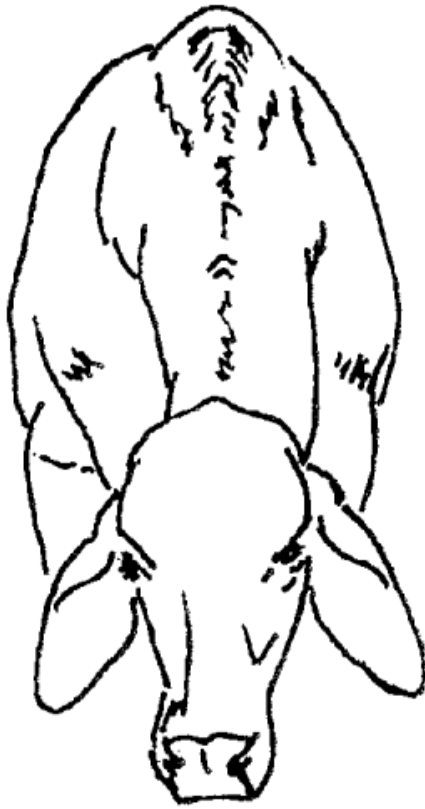
Hind Leg Rear View



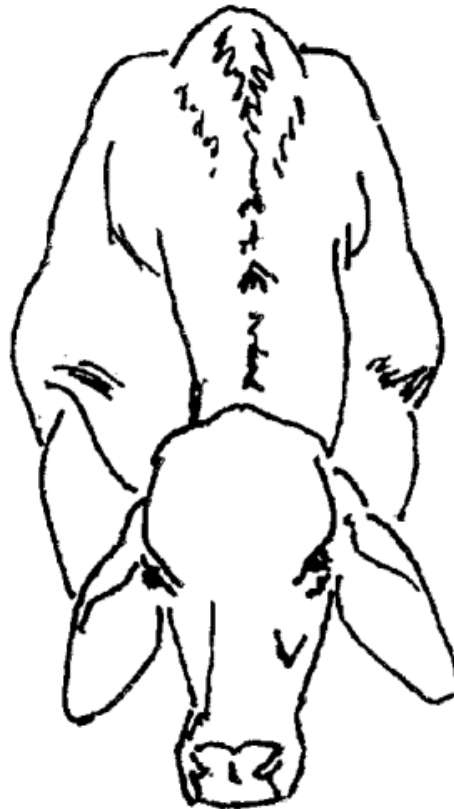


Shoulders

The shoulders are naturally sloping with a shape of 45-60% considered acceptable. An animal with straight shoulders will have the shoulder blade tipped forward. The shoulder should be smooth against the rib cage.



SMOOTH SHOULDERS



PROMINENT SHOULDERS

Front Legs



NORMAL



KNOCK KNEED

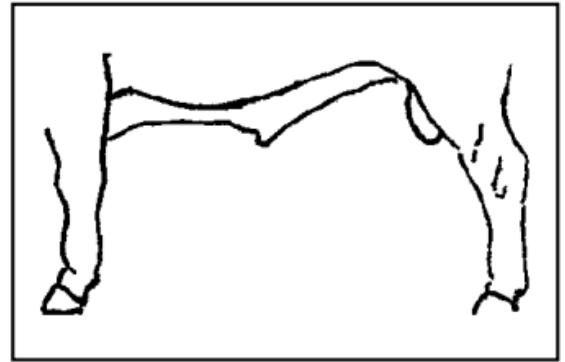


BOW LEGGED

The front legs of the bull should be straight when viewed from in front. On a structurally sound animal, a vertical line may be drawn from the point of the shoulder to the middle of the claw. This line should intersect the knee. It is normal structure for front feet to be slightly turned out.

Sheath

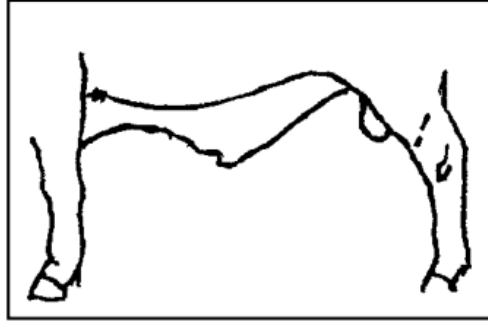
Score	Description	Detailed description
1-3	Tight	Moderately tight sheath, fairly close to abdominal wall, depth up to 10cm with obvious retractor prepuce muscle, moderate sized preputial opening
4	Small	Sheath hangs at 45 angle, depth up to 15cm, moderate umbilicus
5-6	Moderate	Sheath hangs at 45 angle, slightly more pendulous than score 4, with depth less than 20cm, and larger umbilicus
7	Large	Sheath hangs at up to 90 angle, excessive looseness of umbilical area, with depth just above hock-knee horizontal line
8-9	Very large	Sheath hangs at up to 90 angle, excessive looseness and length of umbilicus, sheath depth at or below hock-knee horizontal line, often with eversion of the preputial mucosa



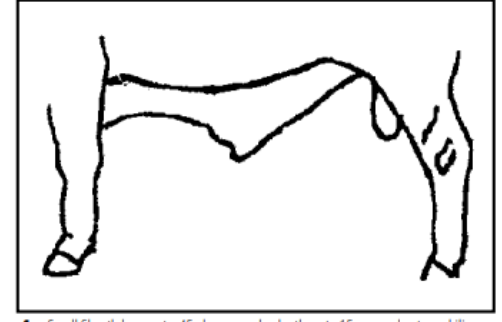
1 – Tight sheath, fairly close to the abdominal wall, depth up to 10cm.



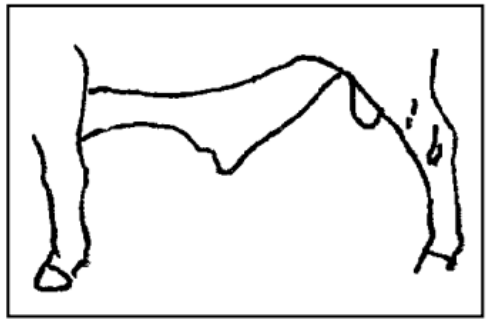
2 – Moderately tight sheath, fairly close to the abdominal wall, depth up to 10cm.



3 – Moderately tight sheath, fairly close to the abdominal wall, depth up to 10cm.



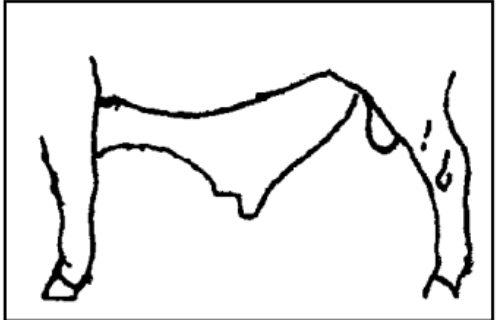
4 – Small Sheath hangs at a 45-degree angle, depth up to 15cm, moderate umbilicus.



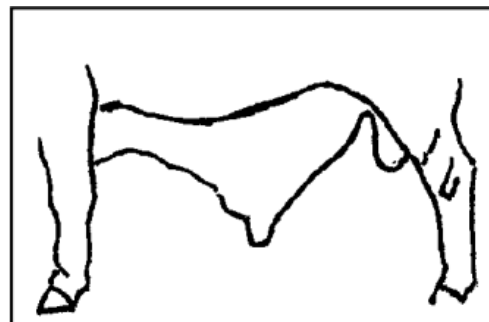
5 – Moderate Sheath hangs at a 45-degree angle, slightly more pendulous than score 4, with depth less than 20cm, and a larger umbilicus.



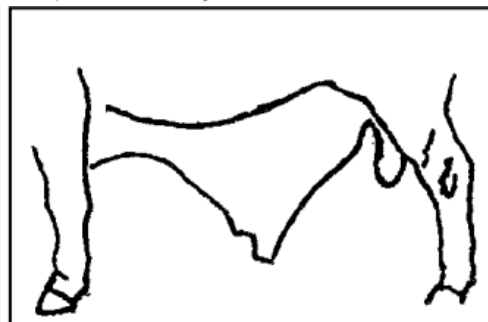
6 – Moderate Sheath hangs at a 45-degree angle, slightly more pendulous than score 4, with depth less than 20cm, and a larger umbilicus.



7 – Sheath hangs at up to a 90-degree angle, excessive looseness of the umbilical area, with depth just above the hock-knee horizontal



8 – Very large Sheath hangs at up to 90 degrees, excessive looseness and length of the umbilicus, sheath depth at or below the hock-knee horizontal line, often with eversion of the preputial mucosa.



9 – Very large Sheath hangs at up to 90 degrees, excessive looseness and length of the umbilicus, sheath depth at or below the hock-knee horizontal line, often with eversion of the preputial mucosa.

Other considerations

- The sheath opening should not be excessively large
- The presence of a rosette in the navel region is a discrimination
- The sheath weight should be light and able to be controlled
- The prepuce should be under control and not protrude for excessive periods

Scrotum and testicles

Examples of variations in scrotal conformation:

- A normal (elongated)
- B normal (rounded)
- C lateral rotation
- D distinctly cleaved scrotum
- E unilateral hypoplasia
- F scrotal hernia
- G incomplete descent of one testicle

